

orthocaps<sup>®</sup>  
creating smiles



## The **TwinAligner**<sup>®</sup> System

- # Leading-edge technology
- # Patient-friendly
- # Accurate, visible results

# System and advantages

Intelligent aligner technology for visible and accurate results

The Orthocaps® TwinAligner® system has set new standards in orthodontic treatments. It is the fruit of years of practical experience combined with biocompatible high-performance materials. The result is an invisible, highly effective and well-tolerated correction for almost every indication.

The Orthocaps® aligner goes one step further with two innovations for visible and accurate results: dual-component material teamed with the TwinAligner® technology.



## # New

### Dual component material

The Orthocaps® aligner is made of high-quality thermoplastic dual component material. The harder outer layer guarantees long-lasting stability while the inner soft plastic layer fits perfectly to the shape of the teeth. This results in better precision, boosted comfort and enhanced patient satisfaction.





### Wide choice of treatments

Thanks to a wide choice of treatments specifically tailored to different age groups and indications, Orthocaps® can treat almost 90% of malocclusions.



### Accurate results

The unique features of Orthocaps® aligners associated with a detailed and individually-tailored treatment plan ensure remarkably accurate results



### TwinAligner® technology

Our aligners are made of biocompatible high-performance materials using leading-edge technology. Each treatment includes two different aligners for lower forces and a better movement control. During the day, the discreet DAYcaps act gently, and at night the more rigid NIGHTcaps provide stronger correction.



### Optimal treatment monitoring

A detailed 3D evaluation report is generated at the end of each treatment phase. This is ideal to make sure that treatment is at all times 100% on schedule.



DAYcaps



NIGHTcaps

### Quality made in Germany

The Orthocaps® aligners are manufactured in our production facility in Germany. This guarantees the highest quality standards, short delivery times and faster service responsiveness.



# Our offer

For every problem, there is a solution



From simple aesthetic correction to more complex malocclusions, Orthocaps® has a solution for nearly 90% of cases thanks to its system specifically tailored to patients' age and indication. Each patient therefore benefits from an accurate and customized treatment.

		Children	Teens	Adults
<b>orthocaps® PRO</b>	This is a versatile complete treatment system that can treat 90% of malocclusions.			
<b>Indications:</b> Deep bite, open bite, overbite, tooth malposition, Class 2, crowding, narrow arches				
<b>orthocaps® KIDS</b>	The system specially designed for children with mixed dentition. The aligners are only worn at night (12h). The best system designed for children between 9 and 12 years old.			
<b>Indications:</b> Lack of space, deep bite, open bite, overbite, malposition, Class 2, crowding, narrow arches, mixed dentition.				
<b>orthocaps® NOCTIS</b>	The ideal system for people whose professional life is incompatible with orthodontic treatment. The aligners are worn at night only (12h), and during the day on weekends when possible: esthetic anterior malpositions (crowding, malpositions, diastema).			
<b>Indications:</b> Aesthetic malpositions of anterior teeth, for example, crowding, malpositions or diastema.				
<b>orthocaps® TEN</b>	In total, 10 series of aligners for treating mild malocclusions: for example, 5 series of aligners on the lower jaw and 5 on the upper jaw, or one single arch with 10 series of aligners.			
<b>Indications:</b> Minor aesthetic malpositions of anterior teeth (crowding, deviation, diastema) dental arch correction.				
<b>orthocaps® TEN TEN</b>	In total, 20 series of aligners for treating non-severe malocclusions: for example, 10 series of aligners on the upper jaw and 10 on the lower jaw.			
<b>Indications:</b> Minor aesthetic corrections of the upper and lower arch (deviation, diastema, dental arches correction).				



# Treatment sequencing

So easy with Orthocaps®!



The Orthocaps®TwinAligner® system is easy to include in your day-to-day practice. Thanks to its well-structured process and comprehensive training, practitioners have no problem using our system. And remember that our team of experts is always here to answer your questions!

## # STEP 1:

### Easy online case submission

Our Orthocaps® portal enables you to submit your cases. Just upload your extra- and intraoral photos and we will tell you within 48 hours if this case can be treated.



## #STEP 3:

### Precise 3D treatment planning

Based on these impressions, we will be creating a digital 3D model with visualization of the final expected results. If needed, you can make changes to this model via your online Orthocaps® account.



## #STEP 5:

### Clearly defined treatment phases

For each treatment phase, you will receive eight sets of aligners to give to your patient.



## #STEP 2:

### Patient record and order placement

Before ordering the aligners, you will be asked to send your silicone impressions (upper and lower), a bite impression, photos and a panorex. You can also send us your digital intraoral scans online.

## #STEP 4:

### Customised Orthocaps® Aligner

Production of your customized aligners starts once you have confirmed the final set up and treatment goals. Aligners are delivered 2 to 3 weeks later.

## #STEP 6:

### 3D evaluation for treatment monitoring

A detailed 3D evaluation report is generated at the end of each treatment phase. This allows you to make changes and adjust the treatment plan if needed.

# Auxiliaries

Innovative solutions for perfection-seekers



Whether you are looking for innovative methods as part of an associated treatment or the right post-treatment retention system, Orthocaps® has the solution you need. Its range of auxiliaries is the perfect complement to help you achieve matchless results.

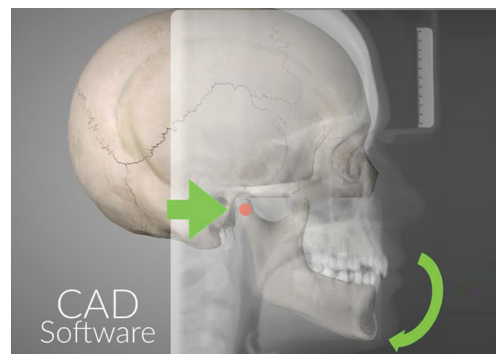
## HAT (Hybrid Aligner Therapie)

This system combines the use of aligners and fixed appliances. The HAT hybrid treatment is the ideal solution when treatment with aligners alone is insufficient. The most important phase of HAT treatment is the simultaneous use of auxiliaries and aligners



## BiteMaintainer

The Orthocaps® BiteMaintainer is a positioner-type appliance made of dental silicone. The BiteMaintainer can be used as a retainer and a finishing appliance for perfect occlusion

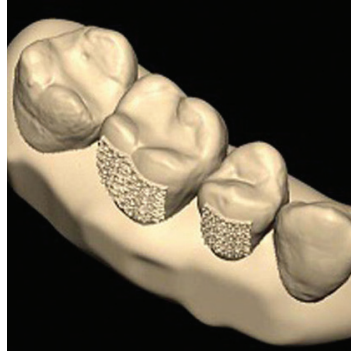


---

## Friction Pads

Attachment innovation:

Our friction pads are extraordinarily thin and almost invisible; a powerful argument to increase patient cooperation.

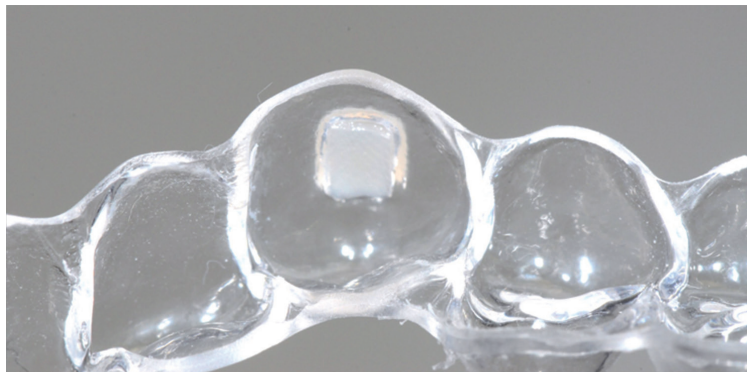


---

## Pre-formed attachments

Our pre-formed attachments enhance tooth movements and are pre-placed in the aligner.

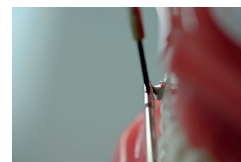
For more discretion, the colour of the attachment can be ordered to match that of the tooth.



---

## Rainmaker

The «Rainmaker», as it is called, is the most recently developed treatment by orthocaps®. This appliance was designed along with the night aligner which helps to correct class II cases.





# Retention

Maintaining the results obtained during orthodontic treatment

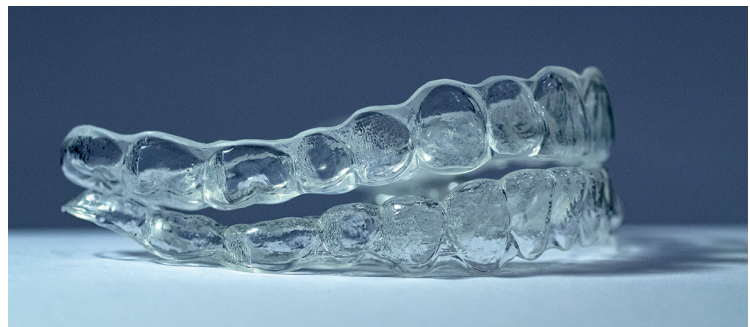


Studies show that without retention, even perfectly-aligned teeth tend to move, hence the necessity of fixed or mobile retention.

---

## orthocaps® Clear Retainer

In order to stabilize the treatment result, after the aligner treatment is completed, patients can wear retention aligners in the long-term. Orthocaps® retention aligners are available upon request and sold in kits of three identical aligners. Patients can wear them day or night for several months, or even years.



---

## orthocaps® Lingualretainer

The Lingualretainer is a retainer wire that is indirectly bonded, and generally stretches from canine to canine. It is a gold wire fitted to a model, then to a transfer aligner. Fixed retainers are worn for an undefined period of time and must be checked regularly by the practitioner.



# Software

## Simple treatment plan with practice-oriented features

iSetup® is a powerful tool that allows you to precisely simulate and visualise each treatment phase. This cloud-based software is compatible with existing operating systems and offers easy-to-use features.

### # Orthocaps® 3D iSetup®

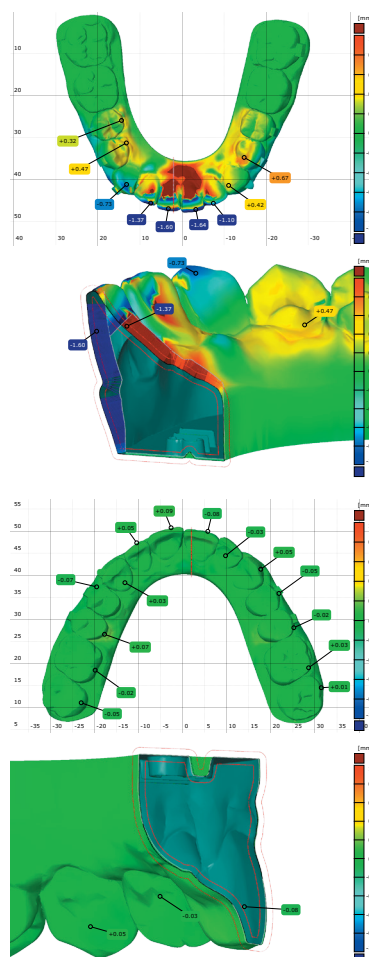
Thanks to its numerous innovative features, iSetup will help you show your patients the treatment objectives and its progress. This is a great way of motivating your patients and boosting their cooperation.



- # User-friendliness of the new 3D iSetup version
- # Clear and intuitive treatment plan
- # Monitoring of intermediate results
- # Tools to make changes in the iSetup
- # Move teeth and choose where you want your attachments

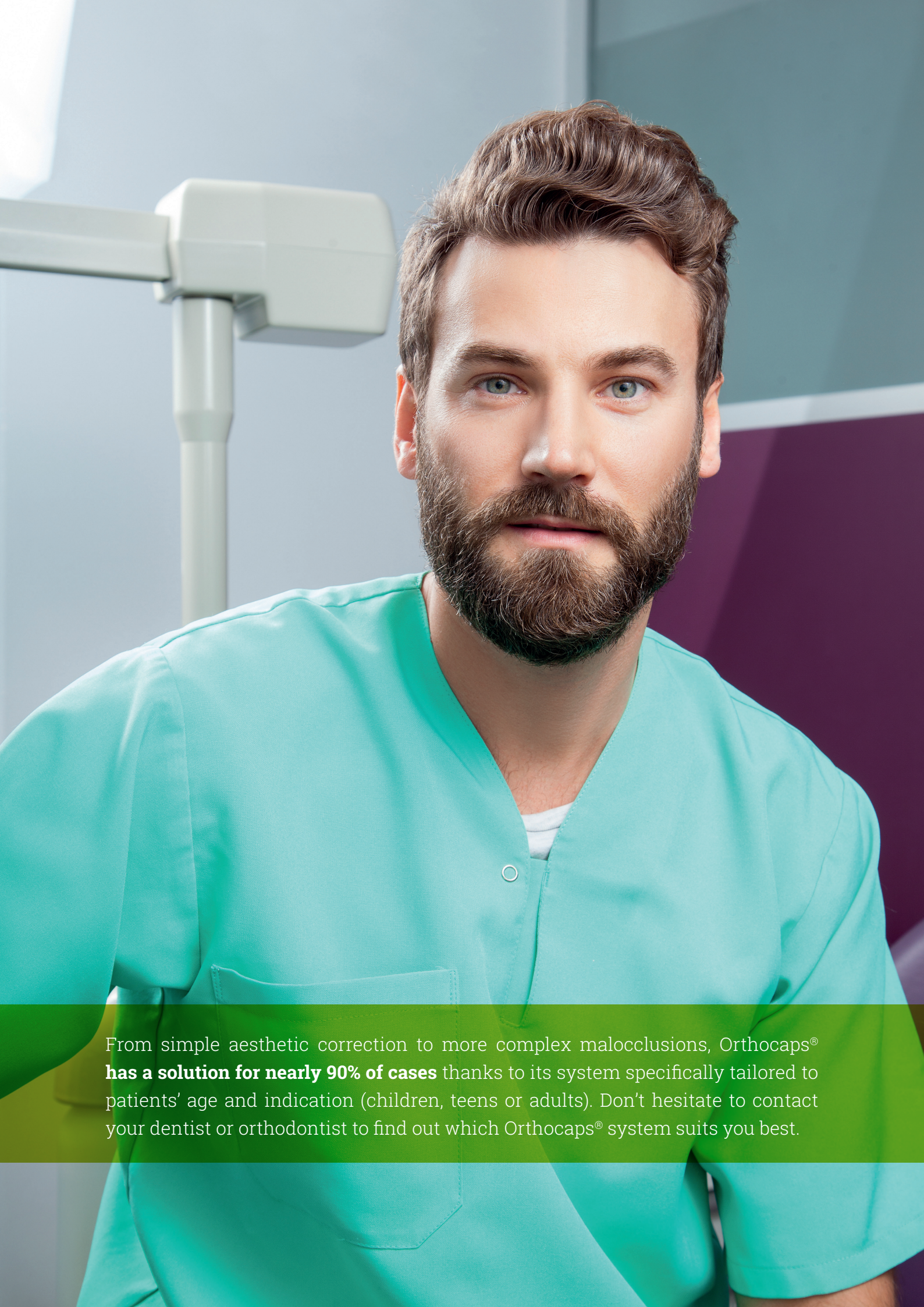
### # 3D evaluation of treatment progress

After each treatment phase, a detailed 3D evaluation report is sent. This helps you react quickly in case of gaps, and adapt treatment plan accordingly



- # Optimal treatment plan and monitoring
- # Continuous identification of problem areas
- # Clear progress and target models
- # Efficacy analysis throughout treatment
- # Easy plan adjustment





From simple aesthetic correction to more complex malocclusions, Orthocaps® **has a solution for nearly 90% of cases** thanks to its system specifically tailored to patients' age and indication (children, teens or adults). Don't hesitate to contact your dentist or orthodontist to find out which Orthocaps® system suits you best.



# Orthodontic treatment with Orthocaps®? Make the right choice!

Expand your services thanks to an effective and innovative orthodontic system adapted for every age and almost every indication. With Orthocaps® aligners, aim for unmatched comfort, quality and results.

**+49 (0) 2385 92190**

**We are looking forward to your call!**

**Visit our website:**

**[www.orthocaps.com](http://www.orthocaps.com)**

# Service and support

Advice and support from our team of experts

At Orthocaps®, we are committed to our client- practitioners and are devoted to providing you with solutions that really matter– every day in your practice and clinic. You can therefore count on our support. Our network of experts (orthodontists, dental technicians and consultants) is here to support you.

## # Telephone support

Telephone support for all your questions related to orthodontics, technology or production is available from 8:00 am to 5:00 pm.

## # Face-to-Face contact

We are also available for face-to-face contact. Just make an appointment and we will organize a face-to-face meeting with one of our Experts.

## # Online support

Our user's portal allows you to quickly and easily communicate with Orthocaps® – short response time is guaranteed.

## Ortho Caps GmbH

An der Bewer 8

59069 Hamm

Germany

+ 49 (0) 2385 92190

+ 49 (0) 2385 9219080

info@orthocaps.com

www.orthocaps.com

Ausgabedatum: 11.05.2019

orthocaps®  
creating smiles